

Budget Simulator Newsletter

January 2011



Greater Manchester
Police Authority



This winter, Greater Manchester Police Authority used its extensive networks of contacts to spread the word about a campaign which asked: “How would you spend the budget for policing?”

Scores of people from every one of the 10 council areas which make up Greater Manchester responded.

This newsletter tells you what they said!



Welcome to the first edition of Greater Manchester Police Authority's Budget Simulator Newsletter

This newsletter shows details of how you think the budget for policing in Greater Manchester should be spent in 2011/2012. The information highlighted in this edition was captured between September 26 and December 1, 2010 using GMPA's online budget simulator tool (www.budgetsimulator.com/GMPA). The tool challenges users to create a budget for 2011/2012 by deciding how much money should be allocated to different policing departments whilst ensuring the total budget remains balanced.

The Results

In total, 979 people completed the online process and submitted a budget. Table 1 below shows the 12 policing departments which people could allocate funds to. They had the option of adding or removing 5%, 10%, 15%, 20% or 25% of last year's funds to each department. People could also keep the department's funds at 2010/2011 levels. Table 1 shows how people opted.

The overall GMP budget for 2010/11 was £695.88m. The average overall budget proposed by the 979 people who submitted a budget was £691.31m. This is a decrease of £4.57m in the overall budget. The average budget proposed for each department is shown in Graph 2 on page three along with the current budget for that department.

Table 1 - Total respondents and allocations made (figures in white refer to numbers of people)

	-25%	-20%	-15%	-10%	-5%	0%	+5%	+10%	+15%	+20%	+25%
Neighbourhood Policing	39	15	36	59	134	180	295	120	43	13	45
Call Management	34	12	40	113	247	330	145	30	11	3	14
Criminal Justice & Custody	27	11	25	69	229	357	159	55	20	7	20
Roads Policing	59	23	63	98	198	320	133	37	19	4	25
Specialist Operations	37	15	24	81	194	410	140	41	13	6	18
Criminal Intelligence	27	10	20	44	148	436	194	51	21	4	24
Serious Crime Investigations	26	5	15	41	138	442	184	65	25	10	28
Forensic Support	23	7	24	33	159	494	164	31	17	8	19
National Policing	60	17	46	97	226	412	69	23	5	6	18
Support Functions	77	31	78	151	210	314	69	22	10	1	16
Police Authority	100	34	52	86	202	404	60	14	3	3	21
Central Overheads	93	38	79	125	246	316	49	13	2	1	17

The results highlight the following:

The most popular choice was to increase Neighbourhood Policing's budget by 5%.

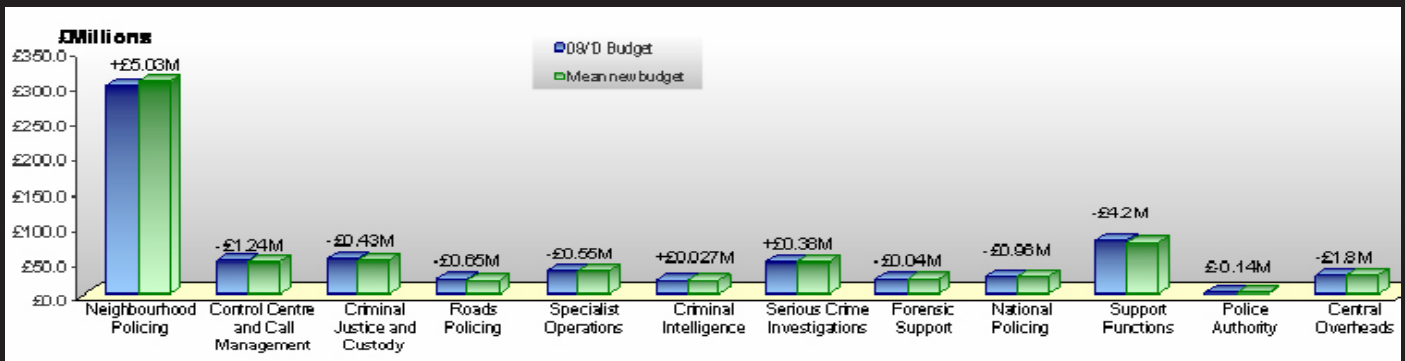
This tells us that you want to see more police officers on the street.

People were more likely to decrease the budget (by -5% to -25%) than increase or maintain it for: Control Centre Management, Criminal Justice and Custody, Roads Policing, National Policing, Support Functions, Police Authority, Central Overheads.

This tells us that you wish to cut spending in these areas.

Large decreases of -20% or more were selected by a noticeable number of people (over 100) for: Central Overheads, Police Authority, Support functions.

This tells us that you want to spend less on the back office and support functions involved with policing.



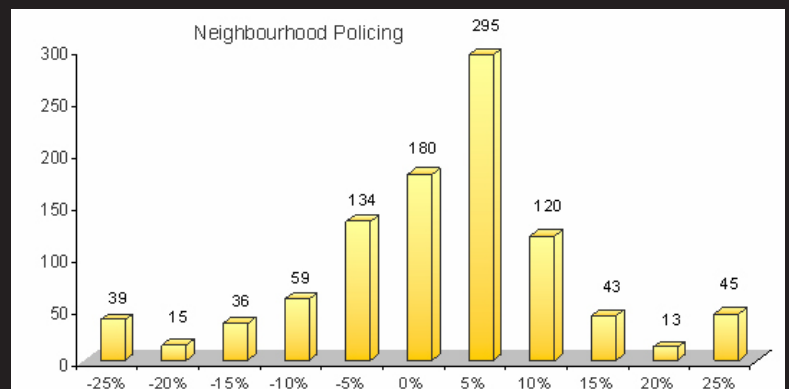
Next year, the changes people said they would make from the current year's budget (2010/2011) were small for most departments. The most noticeable changes were in Neighbourhood Policing (+£5m) and Support Functions (-£4.2m).

Neighbourhood Policing

Neighbourhood Policing represents a very large portion of the budget compared to the other functions so it's reviewed here in greater detail (Graph 3).

Out of the 979 responses, 516 people chose to increase the budget for Neighbourhood Policing, 283 wanted to decrease it and 180 wanted to keep it the same as last year.

This tells us that Neighbourhood Policing is a key priority for the public as 696 of the 979 (71%) chose to maintain or increase the budget in this area.



The most popular response for Neighbourhood Policing was to increase the budget by 5%, which 295 out of the 979 people voted for.

This tells us that you wanted to increase the budget in this area, but by the smallest increment available. If next year's budget for Neighbourhood Policing was increased by 5%, then this would mean an extra £15.11 million pounds would need to be found.

A total of 45 people chose to increase the Neighbourhood Policing budget by 25%

This tells us that 4.6% of respondents wanted to increase the budget in this area, which would mean an extra £75.56 million pounds would need to be found.

What happens to the results?

GMPA sets the budget for policing in February each year and in 2011, Police Authority Members will consider the budget choices submitted before approving the 2011/2012 budget. Once the budget has been set, the second edition of this newsletter will be issued to let you know about the decisions made.

The Budget Simulator website is still open and any budgets submitted after December 1, 2010 will still count - the feedback is monitored and reported to Authority Members all year round. This ensures that as and when any decisions relating to finance are made, the Members who represent you are fully informed about your views.



Greater Manchester
Police Authority

And there's more...

The Budget Simulator is just one tool which your Police Authority uses to consult local people on important policing issues. Face-to-face surveys are also used and you may have seen GMPA out and about during the summer with Greater Manchester Police aboard the Have Your Say exhibition van. The van made stops at local communities the length and breadth of Greater Manchester and in each location, local residents were encouraged to tell Authority staff the issues they think should be priorities for Greater Manchester Police. The Police Authority is the body which sets the priorities for the Force to work towards each year so it's vital GMPA Members, who represent local people, know what people think before they set the priorities. This year, more than 1,700 people got involved and had their say and the Authority will consider all the responses when it sets the 2011/2012 priorities for the Force in early 2011.

And finally...

Every person who provided their email address after completing the Budget Simulator exercise between September 26 and December 1 was entered into a prize draw. A £100 gift voucher is now headed to the owner of a randomly selected email address.

If you would like any more information about the budget simulator or the budget setting process please contact us.

Email: info:gmpa.gov.uk

Tel: 0161 793 3127

An Authority for Effective Policing